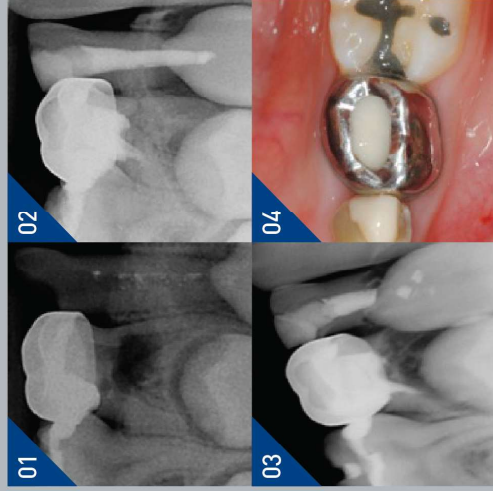


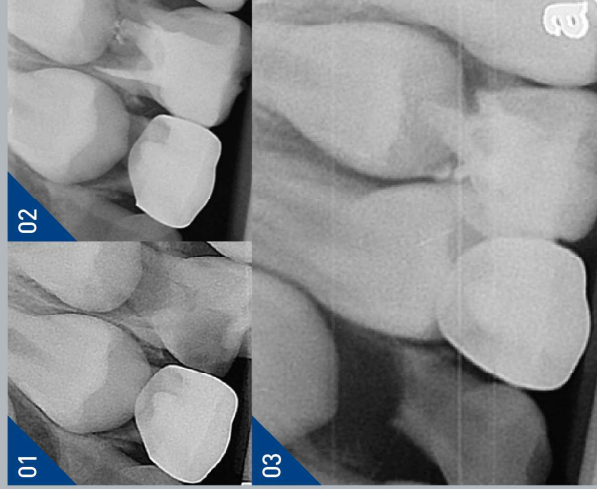
FAQ Can it be used in deciduous teeth?

○ CASE 1



- 01 In case of the deciduous teeth, Endoseal MTA must be used only by fit-self in order to be naturally absorbed as the root of deciduous tooth. It must be never used with GP cone.
- 02 In case of endodontic treatment for the deciduous teeth, if sealing the accessory canal by applying Endoseal MTA onto the bottom of the pulp chamber as at least 2-mm thickness, it can yield more predictable results.
- 03 If there is a furcation defect, a permanent tooth eruption is faster than an alveolar bone regeneration resulting from effects of MTA. Therefore, you must inform the guardian of the possibility of early eruption.

○ CASE 2



In case of root perforation having lesions, Endoem MTA, which has more faster setting time, was used instead of Endoseal MTA, however a deciduous canine adjacent to the surrounding was filled with Endoseal MTA.
After a year, the natural eruption of the permanent tooth and absorption of Endoseal MTA were observed.

○ CASE 3



This is common case of pulpctomy by Endoseal MTA and pulpctomy by Endoem MTA. In case of a deciduous tooth with a furcation defect, the eruption of the follow-up permanent tooth occurs earlier than the alveolar bone regeneration, even after a complete healing.
A naturally absorbed Endoseal MTA has been observed.